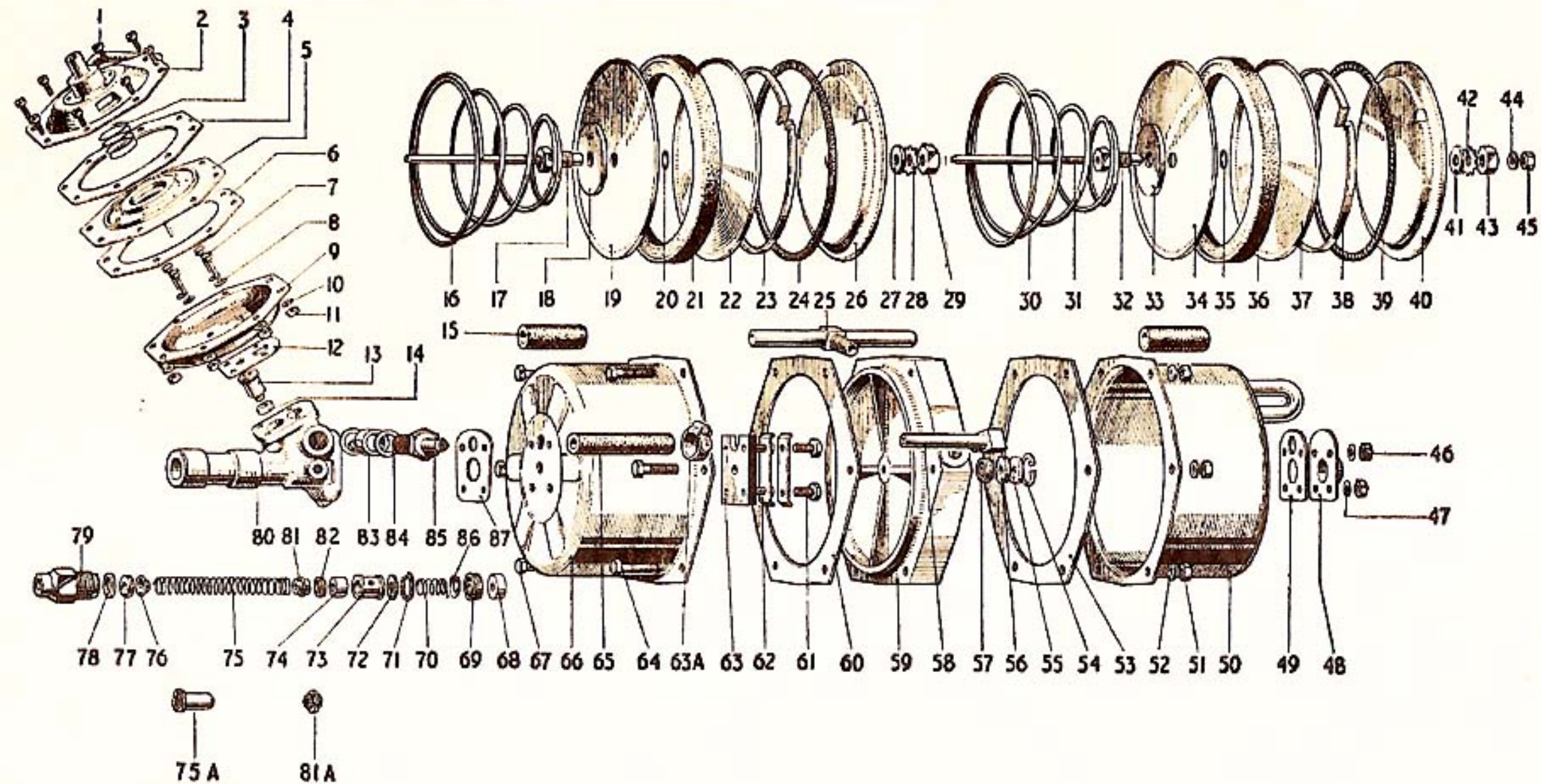


Figure
SC

Page 42. VOLUME 2



6 1/2" TANDEM CAR SERVO BRAKING UNIT



6 7/8" TANDEM CAR SERVO BRAKING UNIT



Figure
SC
VOLUME 2.

Fig.	Servo Unit Part No.	Vacuum Cyl. Dia.	Slave Cyl. Dia.	Application	Major Repair Kit No.	Piston Packing Kit No.	Air Control Valve Kit No.	Alternative Servo Units
SC.1	90578	6 7/8"	1/2"	Princess Mk. IV RHD/LHD, Saloon and Limousine, Vanden Plas 4 Litre	SSB.72573	KL.72523	KL.72525	—
SC.2	4257-567	6 1/2"	1/2"	Bristol 407	SSB.72573	KL.72523	KL.72525	—

LIST OF PARTS

Figure SC

Ref. No.	Part No.	Description and Unit Application	No. Off	Notes	Ref. No.	Part No.	Description and Unit Application	No. Off	Notes
1	K.14303RP	BOLT For both Servos	8		25	90573	PIPE & ELBOW For both Servos	1	
2	90654	VALVES & COVER For both Servos	1	A	26	88733	END STOP For both Servos	1	†
3	91800	SPRING For both Servos	1		27	K.20809	WASHER For both Servos	1	†
4	88718	GASKET For both Servos	1	A	28	K.19409	SHAKEPROOF WASHER For both Servos	1	†
5	88709	DIAPHRAGM For both Servos	1	A	29	K.24105	NUT For both Servos	1	†
6	88718	GASKET For both Servos	1	A	30	88806	SPRING For both Servos	1	
7	K.23502	SCREW For both Servos	4		31	90235	PUSH ROD For both Servos	1	P†
8	K.19405	SHAKEPROOF WASHER For both Servos	4		32	90316	ADJUSTER NUT For both Servos	1	†
9	88805	VALVE HOUSING For both Servos	1		33	88022	LOCATING WASHER For both Servos	1	†
10	K.19404	SHAKEPROOF WASHER For both Servos	8		34	88731	PISTON PLATE (Outer) For both Servos	1	†
11	K.18604RP	NUT For both Servos	8		35	25844	SEAL For both Servos	1	P†
12	88801	GASKET For both Servos	1	R	36	107419	SEAL For both Servos	1	P†
13	88719	PISTON For both Servos	1		37	88732	PISTON PLATE (Inner) For both Servos	1	†
14	3862-423	SEAL For both Servos	1	R	38	82138	PISTON RING For both Servos	1	†
15	84795	RUBBER CONNECTOR For both Servos	2		39	25835/21.25	WICK For both Servos	1	P†
16	88806	SPRING For both Servos	1		40	88733	END STOP For both Servos	1	†
17	4114-052	SUB ASSY. PUSH ROD For both Servos	1	P†	41	K.20809	WASHER For both Servos	1	†
18	88022	LOCATING WASHER For both Servos	1	†	42	K.19409	LOCK WASHER For both Servos	1	†
19	88731	PISTON PLATE (Outer) For both Servos	1	†	43	K.24105	NUT For both Servos	1	†
20	25844	SEAL For both Servos	1	P†	44	KL.44509	COPPER GASKET For both Servos	1	†
21	107419	SEAL For both Servos	1	P†	45	K.24101	NUT For both Servos	1	†
22	88732	PISTON PLATE (Inner) For both Servos	1	†	46	K.24002	NUT For both Servos	4	
23	82138	PISTON RING For both Servos	1	†	47	K.19406	SHAKEPROOF WASHER For Servo 90578	4	
						KL.44513	(COPPER GASKET) For Servo 4257-567	4	
24	25835/21.25	WICK For both Servos	1	P†	48	90563	END CAP For both Servos	1	



6 7/8" TANDEM CAR SERVO BRAKING UNIT.

LIST OF PARTS—cont.

Ref. No.	Part No.	Description and Unit Application	No. Off	Notes	Ref. No.	Part No.	Description and Unit Application	No. Off	Notes
49	32737	GASKET For both Servos	1	R	68	32736	SPIGOT PLATE For both Servos	1	R
50	90571	VACUUM CYLINDER For both Servos	1		69	85946	SEAL For both Servos	1	R
51	K.24001RP	NUT For both Servos	6		70	92954	SPRING For both Servos	1	
52	K.19405	SHAKE PROOF WASHER For both Servos	6		71	113067	CIRCLIP For both Servos	1	
53	87842	GASKET For both Servos	1	P	72	96462	WASHER For both Servos	1	
54	K.19715	CIRCLIP For both Servos	1	R	73	97266	DISTANCE PIECE For both Servos	1	
55	27661	WASHER For both Servos	1		74	82601	PISTON For both Servos	1	R
56	90236	LUBRICATOR For both Servos	1	R	75	109881	RETURN SPRING For both Servos	1	
57	90239	OIL SEAL For both Servos	1	R	75a	109580	SPRING RETAINER For Servo 4257-567 only	1	
58	90572	PIPE CONNECTION For both Servos	1		76	88724	VALVE ASSEMBLY For both Servos	1	R
59	90574	CENTRE PIECE For both Servos	1		77	88721	VALVE WASHER For both Servos	1	R
60	87842	GASKET For both Servos	1	P	78	KL.44526	COPPER GASKET For both Servos	1	
61	K.23602 K.23603	BOLT For Servo 90578 For Servo 4257-567	4 4		79	88728	END PLUG For both Servos	1	
62	82454	LOCKING PLATE For both Servos	2	R	80	88764	SLAVE CYLINDER For both Servos	1	
63	32739	PLATE For both Servos	1		81	85573	SPRING GUIDE For Servo 90578 only	1	
63a	K.20303	HOSE CLIP For both Servos	1		81a	109579	SPRING RETAINER For Servo 4257-567 only	1	
64	K.22810RP	BOLT For both Servos	3		82	92328	CUP For both Servos	1	R
65	90562	HOSE CONNECTOR For both Servos	1		83	89169	BANJO CONNECTION For both Servos	1	
66	114498	CYLINDER & SUPPORT PLATE For both Servos	1		84	KL.44526	COPPER GASKET For both Servos	2	R
67	K.22812RP	BOLT For both Servos	3		85	90285	BANJO BOLT For both Servos	1	
					86	32737	GASKET For both Servos	1	R

NOTES. R Parts contained in Major Repair Kit.
P Parts contained in Piston Packing Kit.
A Parts contained in Air Control Valve Kit.
‡ Parts comprising Piston Assembly KL.74309.
† Parts comprising Piston Assembly KL.74310.

56. VOLUME 2



Repair Kits for Vacuum Servo Units

BUYERS' GUIDE

SSB.72573	90578 4257-567	Austin. Bristol.
-----------	-------------------	---------------------

Repair Kits for Vacuum Servo Units

BUYERS' GUIDE



VOLUME 2.

KL.72523	90578 4257-567	Austin. Bristol.
KL.72524	89368	Jaguar.
KL.72525	90578 4257-567	Austin. Bristol.