

Exhaust System

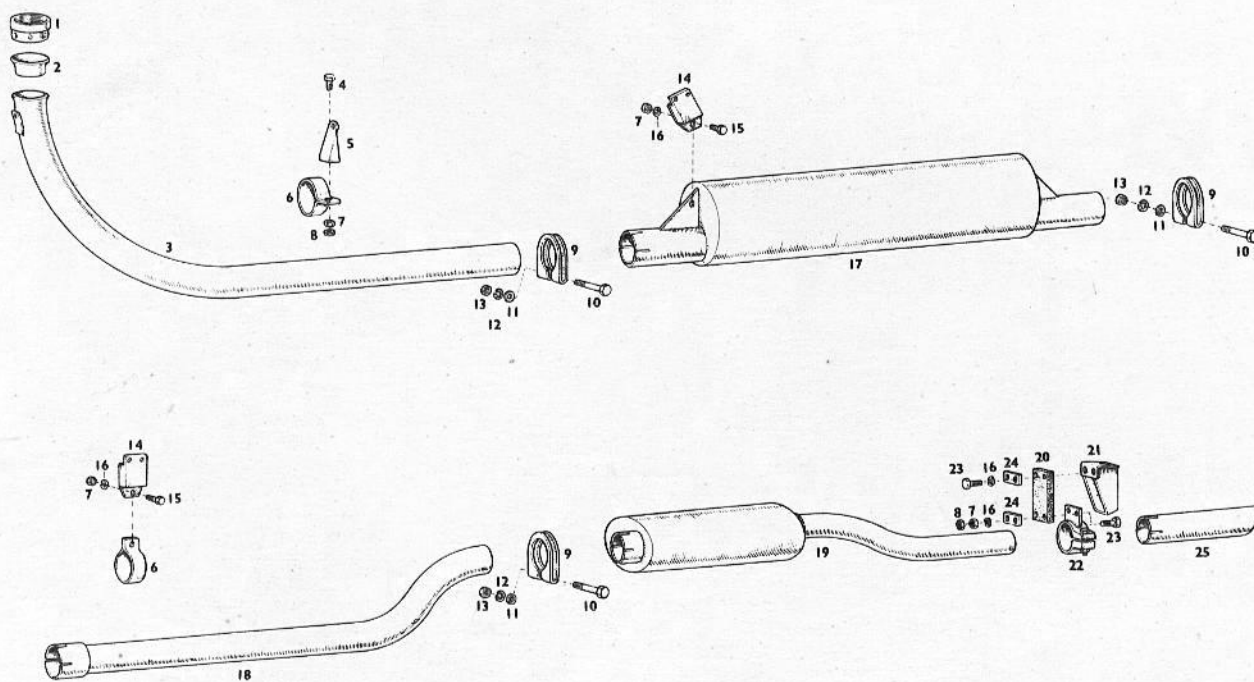
Exhaust System

List of Contents

	PAGE
Spares Illustrations	
Type 404 Exhaust System	2
Type 405 Exhaust System	3
Type 405 (Drophead) Exhaust System	4
Description	5 & 6
Servicing	6

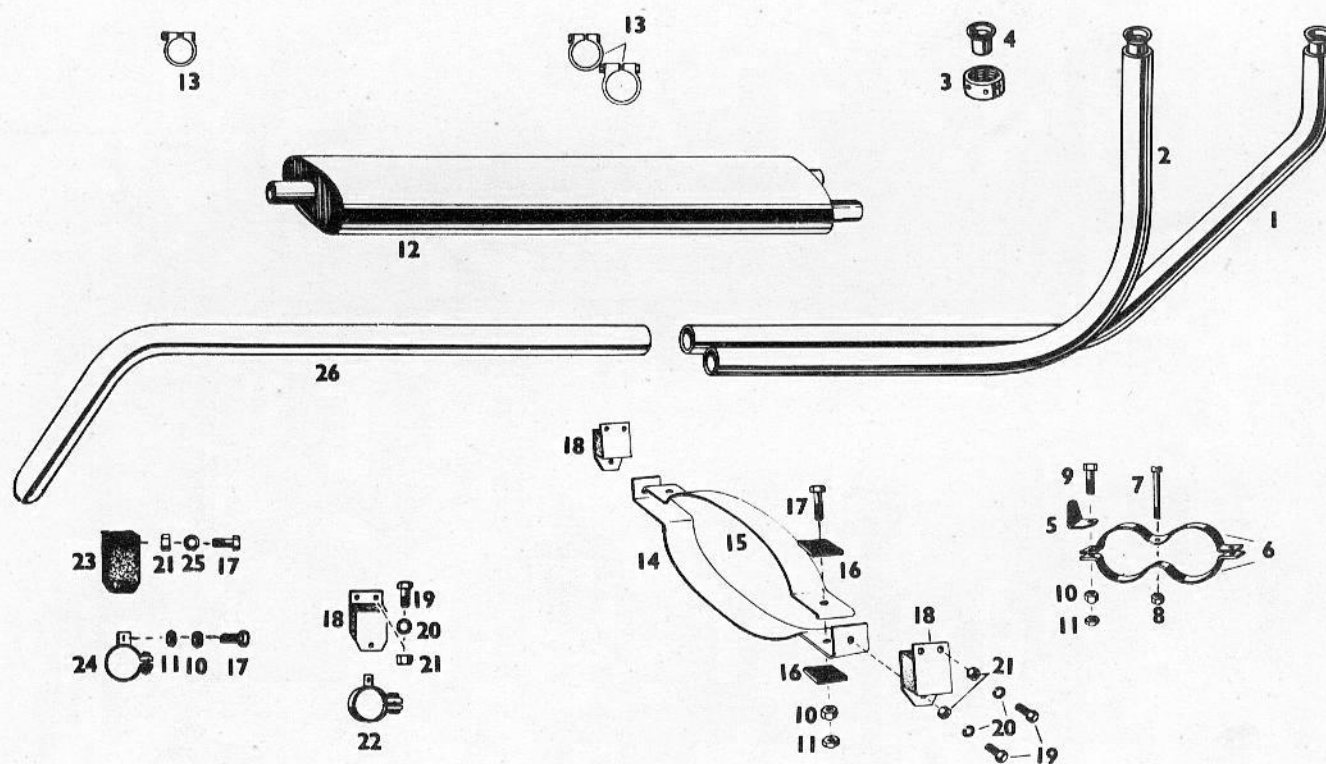
TYPE 404. EXHAUST SYSTEM.

Part No.	Item	Description	No. off per car	Part No.	Item	Description	No. off per car
404-1-29003	1	Ring Nut	1	N.510631	14	Flexible Mounting	2
404-1-29007	2	Socket	1	FS104/4D	15	Setscrew $\frac{1}{4}$ " BSF - $\frac{1}{2}$ " long	2
404-1-29006	3	Exhaust Down Pipe	1	AGS.585/D	16	Spring Washer $\frac{1}{4}$ "	2
FB.104/6D	4	Bolt $\frac{1}{4}$ " BSF $\frac{1}{4}$ " long	1	404-1-29016	17	Main Silencer	1
404-1-29009	5	Bracket - Exhaust Down Pipe	1	404-1-29028	18	Intermediary Pipe	1
404-1-29010	6	Pipe Clip - Exhaust	1	404-II-29040	19	Tail Silencer	1
-	7	Nut $\frac{1}{4}$ " BSF - Brass	6	404-II-29035	20	Exhaust Mounting Rubber	1
-	8	Locknut $\frac{1}{4}$ " BSF - Brass	5	404-II-29034	21	Mounting Bracket - Tail Pipe	1
N.510591	9	Pipe Clip	3	404-II-29036	22	Pipe Clip - Rear	1
FB105/28D	10	Bolt $\frac{5}{16}$ " BSF $3\frac{1}{2}$ " long	3	FB.104/8D	23	Bolt $\frac{1}{4}$ " BSF 1" long	4
-	11	Washer $\frac{5}{16}$ " Plain	3	404-II-29037	24	Clamping Plate	2
AGS.585/E	12	Spring Washer $\frac{5}{16}$ "	3	404-II-29039	25	Chromed Sleeve	1
-	13	Nut $\frac{5}{16}$ " BSF - Brass	3				



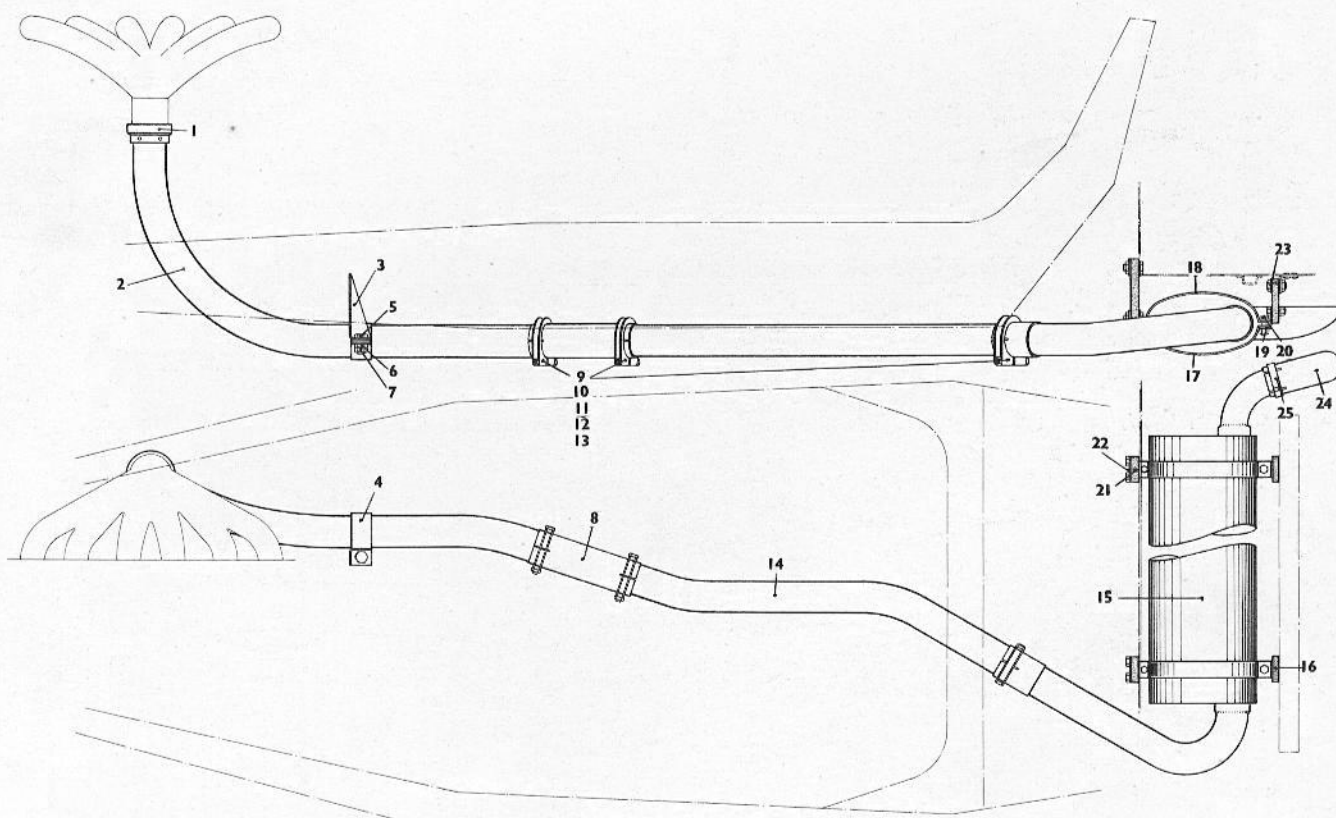
TYPE 405. EXHAUST SYSTEM.

Part No.	Item	Description	No. off per car	Part No.	Item	Description	No. off per car
405-1-29013	1	Exhaust Down Pipe - Front	1	N.716061	14	Silencer Clip - Bottom Half	1
405-1-29014	2	Exhaust Down Pipe - Rear	1	N.716062	15	Silencer Clip - Top Half	1
N.510171	3	Ring Nut	2	N.716068	16	Reinforcing Plate	4
N.510591	4	Socket	2	FB104/8D	17	Bolt $\frac{1}{4}$ " BSF x 1" long	5
N.716087	5	Lug	1	N.510631	18	Flexible Mounting	3
N.716059	6	Clip	2	FB.104/4D	19	Bolt $\frac{1}{4}$ " BSF x $\frac{1}{2}$ " long	9
-	7	Bolt 2BA Cheese Hd. $1\frac{1}{2}$ " long	1	-	20	Spring Washer $\frac{1}{4}$ " dia.	9
-	8	Nut 2BA Brass	1	FN104/K	21	Nut $\frac{1}{4}$ " BSF	9
FB104/6D	9	Bolt $\frac{1}{4}$ " BSF x $\frac{3}{4}$ " long	2	N.716066	22	Exhaust Pipe Clip complete	1
-	10	Nut $\frac{1}{4}$ " BSF - Brass	4	405-1-29016	23	Exhaust Mounting Rubber	1
-	11	Locknut $\frac{1}{4}$ " BSF - Brass	4	405-1-29024	24	Pipe Clip - Rear - complete	1
N.716058	12	Silencer	1	-	25	Washer $\frac{1}{4}$ " Plain	2
N.716063	13	Pipe Clip - complete	3	405-1-29022	26	Tail Pipe	1



TYPE 405. EXHAUST SYSTEM. DROPHEAD CAR ONLY.

Part No.	Item	Description	No. off per car	Part No.	Item	Description	No. off per car
404-1-29003	1	Ring Nut	1	405-1D-29001-3	14	Centre Pipe	1
405-1D-29001-1	2	Down Pipe	1	405-1D-29001-15	15	Exhaust Pipes and Silencer complete	1
405-1D-29001-7	3	Bracket	1		10		
404-1-29010	4	Pipe Clip	1	405-1-29016	16	Mounting Rubber - short	1
FB.104/6D	5	Bolt	1	405-1D-29001-8	17	Silencer Clip - Bottom	1
-	6	Nut 1/4" BSF Brass	17	N.716062	18	Silencer Clip - Top	1
-	7	Locknut 1/4" BSF Brass	17	N.716068	19	Reinforcing Plate - Silencer Clip	8
405-1-29001-2	8	Coupling Pipe	1	FB.104/8D	20	Bolt	16
N.510491	9	Pipe Clip	3	405-1D-29001-9	21	Mounting Rubber	2
FB.105/28D	10	Bolt	3	404-II-29037	22	Clamping Plate	2
-	11	Washer 5/16" Plain	3	-	23	Washer 1/4" Plain	8
AGS.585/E	12	Spring Washer	3	404-II-29039	24	Chromed Sleeve - Tail Pipe	1
-	13	Nut 5/16" BSF Brass	3	-	25	Jubilee Clip Size 2A	1



Exhaust System

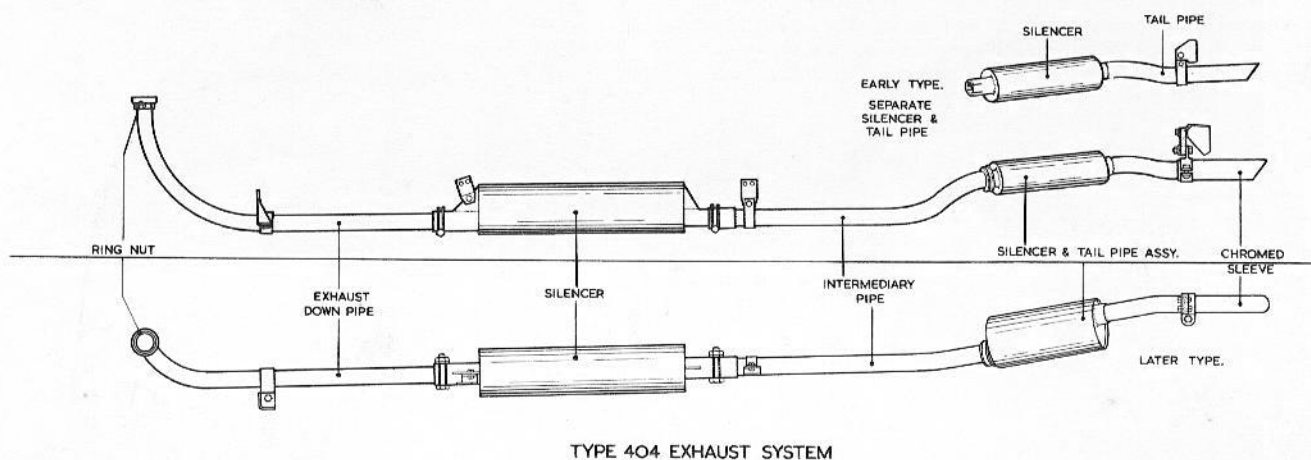
Type 404 Cars

The exhaust system is shown in Fig.177 with its earlier and later type tail silencer. Up to Chassis 2028 the tail silencer was a separate unit, with a separate and combined tail pipe and clip. On and from Chassis 2029 the tail silencer and tail pipe are one unit with a Chromed tail pipe as an additional part. At the same time the attachment of the tail pipe to the chassis was altered.

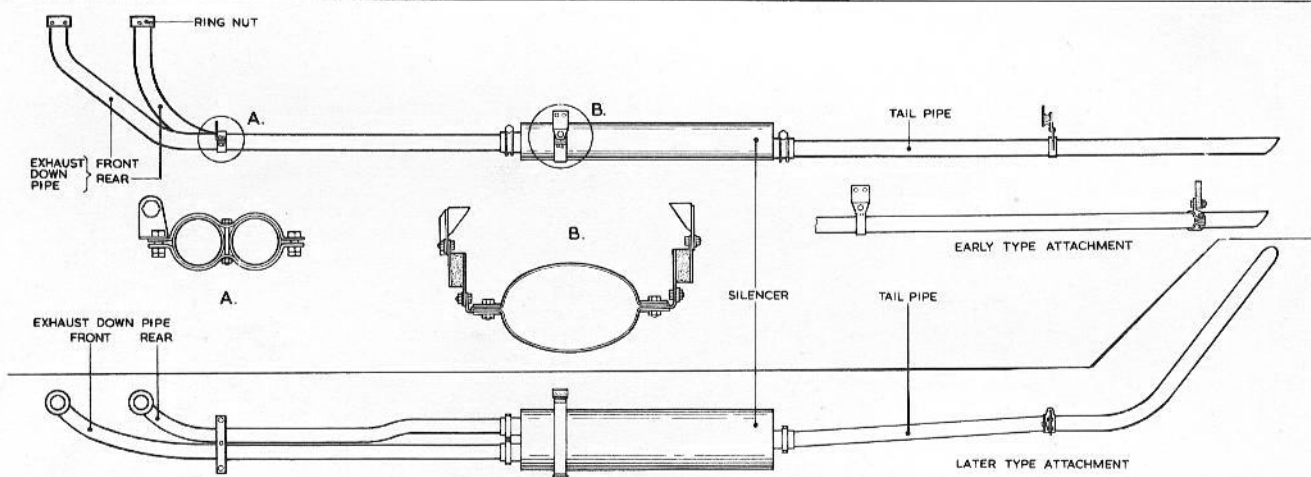
Type 405 Cars

The exhaust system is shown in Fig.177. On very late cars the tail pipe clip and the attachment to the chassis was moved from the boot panel to the rear of the boot to eliminate exhaust vibration.

On all but early cars an exhaust heat shield was fitted between the silencer and the rear right hand floor, while a further heat shield can be fitted to the exhaust



TYPE 404 EXHAUST SYSTEM



TYPE 405 EXHAUST SYSTEM

Fig. 177. Exhaust system. Type 404 and 405 cars

down pipes to special order only. Both types of heat shields are shown in Fig.178.

Type 405 Drophead Cars

This system is shown in the Spare parts illustration of the Exhaust System.

Servicing

There is no gasket or packing used at the joint between the exhaust manifolds and the exhaust down pipes at the ring nut location. The exhaust manifold outlets are spherical and the pipes are spherically bell-mouthed.

In the event of the flange of the down pipes becoming damaged a flanged socket is available as a spare. The top of the pipe with its flange, can therefore be cut completely away and the socket welded into the pipe.

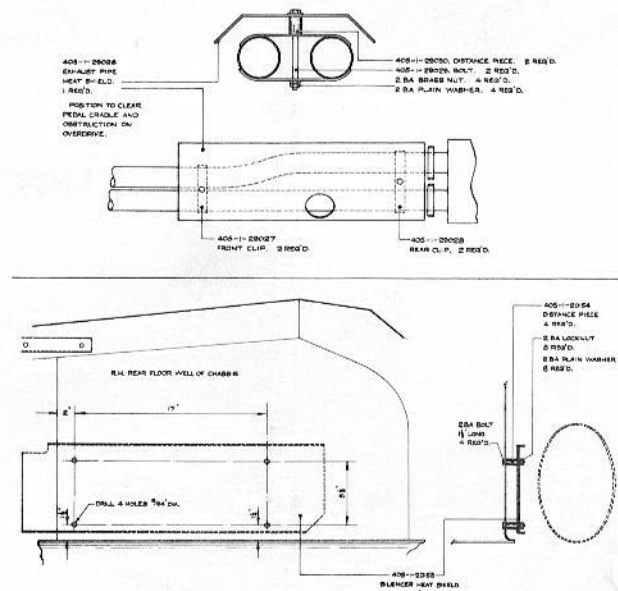


Fig. 178. Exhaust heat shields